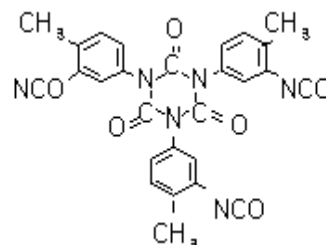


TECHNICAL DATA SHEET

DESCRIPTION

KONNATE IL-50 is an aromatic polyisocyanate based on toluene diisocyanate and dissolved in butyl acetate.

MOLECULAR STRUCTUR



PRODUCT SPECIFICATION

Items	Value
Solid Content (%)	50±1
NCO Content (%)	8.0±0.5
Free TDI (%)	Max. 1.0
Viscosity(at 25°C, Gardner)	R ~ X
Color (Gardner)	Max. G-1

PHYSICAL PROPERTIES

Items	Value
Equivalent Weight (Average)	525
Density (g/ml, at 20°C)	1.09
Flash Point (°C)	31

PROPERTIES / APPLICATIONS

KONNATE IL-50 is used in the formulation of fast drying two-component clear and pigmented polyurethane coatings for wood, metal, and paper substrates.

Properties :

- Fast drying
- Hardness
- Compatibility with polyol

Applications :

- Wood
- Polyurethane varnish
- Silk screen ink
- Synthetic leathers

SOLUBILTY

- Aromatic Hydrocarbons (Toluene, Xylene) : Limited
- Esters and ketones (Ethyl acetate, Butyl acetate, MEK) : Complete
- Aliphatic Hydrocarbons (n-Hexane) : not compatible.

STORAGE

The product is sensitive to moisture and should therefore be stored in its sealed original containers.

Containers should be tightly sealed and protected from heat, moisture, and foreign materials. The recommended storage temperature is between 0°C to 30°C. Storage at higher temperatures will cause an increase in viscosity.

SHIPPING INFORMATION

200 kg steel drums .

SAFETY INFORMATION

The material safety data sheet (MSDS) should be observed. This contains information on labeling, transport and storage as well as on handling, product safety and ecology.

Head Office : 04541, 16F, Hanwha BLDG., 86, Cheonggyecheon-ro, jung-gu, Seoul, Korea

TEL : +82-2-729-3079, FAX : +82-2-729-5347, <http://hcc.hanwha.co.kr>

TDI Plant : 59611, 46-47 , Yeosusandan 2-ro, Yeosu-si, Jeollanam-do, Korea, ,

TEL : +82-61-688-4800, FAX : +82-61-688-4919